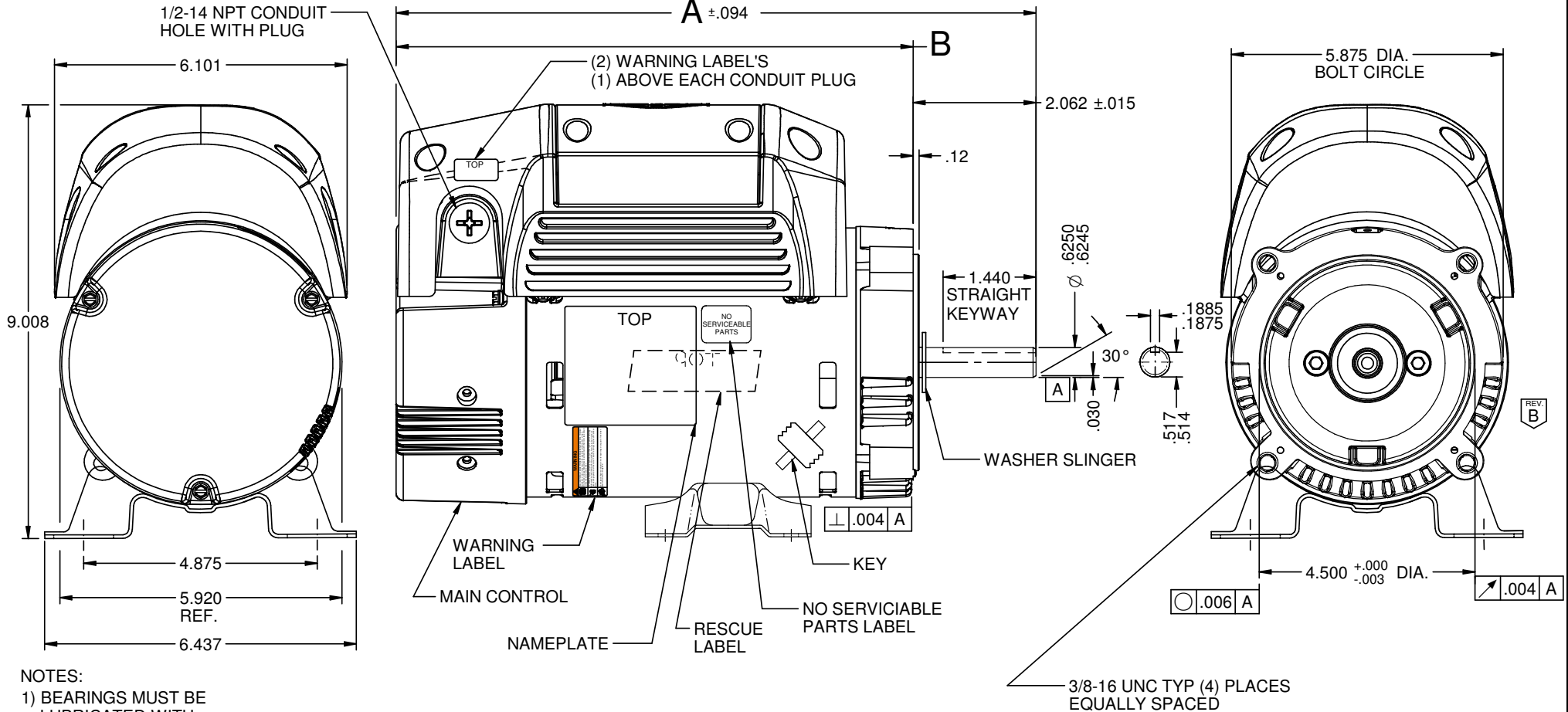


VAR	MODEL	CUSTOMER	CATALOG NO.	A	B	HP	VOLTS	SF	AMPS	HZ	RPM	CONN VOLTS	PROT.	DESCRIPTION / REMARKS
001	M055PWMBT-2643	WHOLESALE HAC	EC8320F	12.832	10.770	3/4	115	1.0	8.2-9.1	60 & 50	1800/VAR SPD	120	ELECTRONIC	CCW SHAFT END REV



NIDEC MOTOR CORPORATION 15-Dec-18

REFER TO S.E.I.M. 24-1

REVISION RECORD FOR: ECO E31451		TOLERANCES ON DIMENSIONS (UNLESS OTHERWISE SPECIFIED)		NIDEC MOTOR CORPORATION			REVISION DATE: 17-DEC-18				
IT WAS REMOVED SLOT IN SCREW OF ENDSHIELD SHAFT END		INCHES .XX = ±.010 .XXX = ±.005		mm		INFORMATION DISCLOSED ON THIS DOCUMENT IS CONSIDERED PROPRIETARY AND SHALL NOT BE REPRODUCED OR DISCLOSED WITHOUT WRITTEN CONSENT OF NIDEC MOTOR CORPORATION			TITLE: CUSTOMER DETAIL DRAWING		
ISSUED BY: C.ALMAGUER		ENGINEER APPROVED: J.SALINAS		ANGLES X° = ±1°		CODE: V02			ITEM NO.: 817953		
						REV: B			SHEET NUMBER: 1 OF 6		
									DWG SIZE: B		